

Courtesy of Rio Tinto



The Chamber of Minerals and Energy of WA

Annual Report 2023



CME

The Chamber of
Minerals and Energy
of Western Australia

ACKNOWLEDGEMENT OF COUNTRY

We respectfully acknowledge the Traditional Custodians of the lands on which we live, travel and operate throughout Western Australia. We acknowledge their enduring connection to the lands, waterways and communities and pay our respects to Elders past, present, and emerging.

Contents

Message from the President	4
Message from the CEO	5
2024 Priorities	6
Industry Economic Achievements in 2023	7
2023 Achievements	8
Industry Competitiveness and Economics	8
Resource Development and Sustainability	10
Health, Safety and People	11
Education, Skills and Training	12
Regional WA	12
– South West	12
– Goldfields	13
– Pilbara	14
– Kimberley	14
Communications and Events	15
2023 Key Events	18
CME Members	20
Ordinary members	20
Associate members	21

Message from the President

Brandon Craig



As President of the Chamber of Minerals and Energy of Western Australia (CME), it is my pleasure to present CME's 2023 Annual Report.

This past year has seen considerable changes in the industry, including successes and challenges that have shaped our path forward. Demonstrating our enduring resilience and adaptability, the sector is weathering market pressures and turbulence while remaining resolute in our commitment to safety, growth, and sustainability.

In 2023 the WA resources sector continued to face the most significant legislative reform agenda in a generation – both state and federal. Throughout this, the CME was central to influencing decision makers and advocating for industry interests to ensure that any legislative change is efficient, effective and bears positive long-term implications for our community's prosperity, security, and endeavours towards decarbonisation.

As we navigate election cycles in 2024, the CME will continue to work unrelentingly to deliver policy outcomes for members, and commence the implementation of our 2024+ Strategy.

The 2024+ Strategy, developed in collaboration with members throughout 2023, recognises our complex strategic context and responds to the priorities of industry as they relate to energy transition, legislative stability, skilled labour, community contribution, low cost of doing business, and continuous improvement in the areas of innovation, efficiency, safety and sustainability.

In 2023 community awareness of WA's role in global energy security and transition grew markedly, in part thanks to the efforts of the CME to highlight the work our members are doing to lead transformative efforts to reduce emissions by investing in renewable power sources and decarbonisation technologies and extracting and processing critical battery materials and other transition and future energy sources. In 2024 CME will build on this momentum, taking a fresh campaign approach that ensures our community understands that resources are essential now and in the future.

I am optimistic about the growth and opportunities 2024 will bring and extend my gratitude to Rebecca and the CME team for their efforts and achievements.

On a personal note, this annual report marks the end of my tenure as CME President. I wish my successor and the entire WA resources sector all the best for the future. I will be watching from afar with great interest and pride.

Message from the CEO

Rebecca Tomkinson



In the midst of legislative uncertainty and market fluctuations, 2023 was a year of record contributions by the mining and resources sector, both economic and social.

Economically, the contribution of WA's mining, oil and gas industries jumped by 30 per cent in 2022-23 to a record \$78 billion pumped directly into the WA economy. That equates to just under \$27,000 per Western Australian, and royalties and other payments accounted for one third of the WA Government's general revenue. Those figures were complemented by record direct spending at the national level of \$132 billion, where industry accounted for one-fifth of company tax paid across the entire country.

While the combined economic contribution to WA and Australia of our member companies is in the billions, the sector's contributions are not just financial.

CME's annual survey of members demonstrates the industry's far-reaching contributions and positive impact, revealing a range of direct and indirect benefits to people and communities. By way of example, last year 1,312 community organisations and more than 15,500 local businesses in WA benefited from the resources sector.

The WA resources sector supports three in 10 jobs across the state. This includes some 94,000 full-time equivalent employees, plus another 352,000 indirect employees supported by the flow-on effects of the industry's spending. The sector's contribution to regional employment is particularly remarkable, supporting approximately half of all employment in the Pilbara and around one third of all jobs in the Goldfields-Esperance and Peel regions.

That's an incredible impact and shows how much mining and resources are part of our state's DNA. This is particularly important in 2024 as the state and federal governments continue comprehensive and ambitious programs of legislative reforms in areas such as climate and energy, industrial relations and environmental protection.

Throughout 2023 CME has been deep in engagement with stakeholders to ensure the government reform agenda achieves best practice protections, while boosting productivity so that we can grow the economic contribution our industry delivers to Australian households and businesses.

As the state and federal election cycles begin to kick into gear, we mustn't lose sight of the strategic government decisions still needed to provide certainty of access to low emissions, reliable and affordable energy, competitive settings to sustain existing projects and secure future investment settings, beneficial trade partnerships and streamlining of regulatory approvals.

We are poised at a time in history where decisions made today will have multi-generational impacts on WA and Australia's prosperity, sovereign security and decarbonisation.

I extend my gratitude to CME's outgoing President Brandon Craig, and Executive Council and Advisory Board members for their guidance and governance. A special thanks also goes to our dedicated team at CME. As you reflect on our activities and achievements in the past year, I am confident you will share in our optimism for the future. Together with our members, we look forward to a year of collaboration, innovation and sustainable growth in 2024.

2024 Priorities



Courtesy of Roy Hill

CME will implement its 2024+ Strategy and Business Plan across its central strategic themes of community, policy and industry. Delivering against this plan in 2024 will include CME advocating for:

- Improvements in efficiency and timeliness of regulatory approvals
- Robust consultation to ensure new federal environmental legislation is workable in WA, does not introduce duplication that adds to assessment delays currently experienced and achieves additional environmental outcomes
- Ensuring stability and putting downward pressure on the cumulative cost of doing business (royalties, taxes, levies, fees and charges)
- Legislative reform that enables safe, sustainable and competitive operations (heritage, environment, industrial relations and climate policy)
- The delivery of a low emissions, reliable and cost-competitive WA energy system that meets forecast demand
- Implementation of the Resources Community Investment Initiative (RCII)
- The transition to the Work Health and Safety legislation and rollout of the new Workers Compensation legislation, including a continued focus on psychosocial health and safety
- Improving diversity and inclusion outcomes
- Safe and respectful workplaces through the implementation of the recommendations from the WA Enough is Enough and Federal Respect@Work report and participation in the MARS Program initiatives.

Industry Economic Achievements in 2023



Data released by the (now) Department of Energy, Mines, Industry Regulation and Safety (DEMIRS) shows another year of record export values:



\$251B
in petroleum
and minerals
for 2022-23

WHICH EQUATES TO...



91%
of WA's total
goods exports



TWO-THIRDS
of Australia's total
resources exports
comes from WA



Iron ore remains the top commodity, accounting for **50%** of WA's total production value



LNG was our second biggest export earner at **\$56B**



Lithium was WA's **2nd** most valuable mineral after iron ore – with gold slipping from 2nd spot for the first time in nearly a decade



Minerals and energy sectors support **3 in 10** jobs in Western Australia



6 consecutive years of jobs growth in the sector with **126,480+** onsite full-time equivalent workers in WA
– according to DEMIRS



WA mining and resources sector accounts for around **one-third** of the WA Government's general revenue – third year in a row

2023 Achievements

Industry Competitiveness and Economics

2024-25 STATE PRE-BUDGET SUBMISSION (PBS)

CME lodged our WA PBS in October 2023 to align with agency budgeting processes and allow the WA Government time to budget for industry's needs. A number of CME's recommendations have already been adopted by government and CME is continuing to track progress across the five priority objectives: a stable and cost competitive environment; efficiency in regulation; energy security and transition; skilled workforce development; and regional economic development.

PRODUCTION TAX CREDIT

CME called for the introduction of an Australian Production Tax Credit (PTC) for battery and critical minerals in its 2024-25 Federal Pre-Budget Submission. CME helped coordinate the nickel and lithium industry roundtables with Ministers King and Michael in January and has engaged closely with members and government regarding the need for, and desired design elements for an Australian PTC.

CRITICAL MINERALS

Consistent with CME's Critical Minerals Position Paper we continued to call for Government to put strategies into action and highlighted the urgent need to streamline regulatory approvals, provide project facilitation support and competitive fiscal settings. At a State level the WA Government established the 'green approvals' unit to facilitate qualifying projects and, consistent with CME's recommendation, nickel was subsequently elevated from strategic material to the Australian Government's critical minerals list.



Rebecca Tomkinson and WA Liberal Party leader Libby Mettam MLA





STRATEGIC INDUSTRIAL AREAS – COMMON USER INFRASTRUCTURE

CME has advocated tirelessly to governments regarding the importance of strategic industrial areas (SIAs) and common user infrastructure as critical enablers for resource development. This includes advocacy via CME’s state and federal Pre-Budget Submissions, submissions regarding critical minerals and hydrogen industry development, and engaging with and facilitating member engagement with the federal Critical Minerals Office.

COMMODITY PRICE DOWNTURNS

The WA Government adopted CME’s recommendation for greater support for nickel producers through the introduction of the Nickel Financial Assistance Program, which offers a 50 per cent rebate on royalties paid on nickel sales each quarter from the March quarter 2024 through to the June quarter 2025. CME continues to advocate to the WA and Australian Government for further measures to remove inefficient government processes, leverage our trading relationships and ESG credentials and deliver competitive fiscal settings.

ENERGY TRANSITION

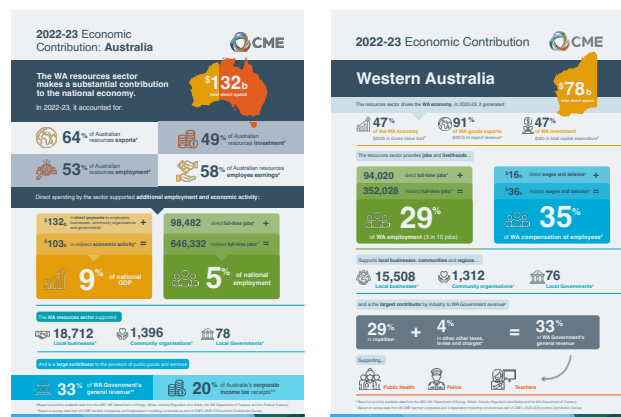
CME advocated for the WA Government’s SWIS Demand Assessment and Registrations of Interest process to help provide certainty around the delivery of a low emission, reliable and cost-competitive energy system. CME advocacy led to increased government focus and engagement with industry on the energy transition culminating in the State Government’s inaugural WA Energy Transition Summit in November.

RE-COMMITMENT TO NO NEW OR INCREASES IN TAXES OR ROYALTIES

Following the resignation of Mark McGowan, CME engaged early with the new Premier, Roger Cook, and achieved a key objective of obtaining his continued commitment to no new or increased taxes or royalties on the sector. A commitment was also obtained to ensure clear oversight of the cumulative impact of fees and charges on our sector.

ECONOMIC CONTRIBUTION FACTSHEETS

CME’s 2022-23 Factsheets were launched in March, showing record direct spending by the WA resources sector of \$132 billion nationally and \$78 billion in WA. The sector supported 3 in 10 jobs in the state. The release of the Factsheets received coverage on mainstream media and highlighted the critical importance of our sector at a time when commodity market volatility and regulatory uncertainty are challenging the industry’s competitiveness and growth opportunities.



Economic Contribution Factsheets



Courtesy of Fortescue

Resource Development and Sustainability

ABORIGINAL HERITAGE LEGISLATION

CME advocacy ensured the resources sector's voice was heard throughout the transition to the amended Aboriginal Heritage Act 1972 which officially came into force in November. CME received a commitment from the State Government to continue to work closely with industry on implementation and to address duplication across cultural heritage and environmental assessment processes.

WA APPROVALS STREAMLINING

Throughout 2023 CME continued to escalate member concerns with approvals processing delays through direct engagement with the WA Government including Treasury and approval agencies. CME advocacy resulted in the Department of Water and Environmental Regulation initiating a series of cross-agency approvals streamlining workshops. The first of these workshops was hosted by CME and identified and agreed specific actions to improve service delivery within and across approvals agencies. These efforts culminated in the WA Government's significant approvals streamlining announcement, an \$18 million reform commitment and the release of the Government's response to the Vogel-McFerran review and Streamline WA's 'Red-tape reduction' review. CME continues to advocate strongly that clear and streamlined approval processes for resource sector projects is critical to maintaining competitiveness.

WA GOVERNMENT CLIMATE AND DECARBONISATION INITIATIVES

CME has played an active role advocating for the needs of the resources sector as the Government works to define Western Australia's climate objectives with key outcomes including the development of a legislative framework that enables Carbon Capture Utilisation and Storage (CCUS) in WA, and ensuring the design of the WA Climate Change Act avoids duplicating industry reduction targets and reporting requirements that are regulated federally.

FEDERAL REGULATORY REFORM

CME advocated strongly to ensure the WA resources sector's views were heard on a number of key Federal Government reforms including workplace relations, Safeguard Mechanism, and Mandatory Climate Related Financial Disclosures. CME attended a public hearing on the Inquiry into the Closing the Loopholes Bill in addition to our submission and efforts to keep the WA Government abreast of the potential impacts of the legislation. CME continues to be actively engaged on proposed Nature Positive reforms to Federal environmental legislation. CME participated in the initial reference group, subsequent invite-only lock-in sessions and secured two member sessions with the Department of Climate Change, Energy, the Environment and Water (DCCEEW) and a forum with the Minister.

Health, Safety and People

TRANSITIONING TO THE NEW WHS LAWS

CME has remained focused on supporting its members and the broader industry through implementation of the new WHS laws including successfully advocating for an extension of the Statement of Regulatory Intent and educational approach to compliance. In response to CME's advocacy, the Government announced a 12-month extension of the transitional period to 30 March 2026 for mines statutory position appointments and continued to engage with industry on clarifying requirements and expectations for Mine Safety Management Systems.

DIVERSITY AND INCLUSION

The release of CME's bi-annual Diversity and Inclusion in the WA Resources Sector Report in March 2023 showcased member initiatives to drive diversity, equality and inclusive practices in their workplaces.

SAFE AND RESPECTFUL BEHAVIOURS

With a strong commitment to eliminating any instance of sexual assault, harassment and other behaviours that threatened safety, CME was invited to support the delivery of the WA Government's Mining Industry Summit – Driving Respect to empower leaders to take meaningful action towards preventing and responding to workplace sexual harassment. CME released the Supporting Safe and Respectful Workplaces – Industry Actions to address the Enough is Enough Report, presenting a broad variety of good practice approaches that can also be adapted to any organisation in any industry.

FAMILY AND DOMESTIC VIOLENCE

CME united with more than 100 of its members, in custom bright orange t-shirts, taking a strong stance against family and domestic violence in the 33rd March Against Domestic and Family Violence through the Perth CBD as part of the 16 Days in WA Campaign.





CME Digital Technologies Program

Education, Skills and Training

CME DIGITAL TECHNOLOGIES ROLLOUT

CME's Digital Technologies education program expanded to 81 schools in 2023. More than 1,400 students (97 per cent located in regional areas) participated in one or more challenges, with 153 teachers receiving coaching and support for classroom delivery. Located across Perth, Pilbara, Goldfields, Kimberley, Peel and South West regions, the DigiTech program engages students from pre-primary to year 10 to connect in-class 'hands on' learning with real-world examples of obstacles faced by today's sector.

SKILLS SHORTAGE

CME continued to advocate for migration settings to ease the pressure on WA's labour market. Through the CME-hosted Resource Industry Training Council, we also contributed to the Annual WA Jobs Employment and Training Survey, reporting on key occupations across mining and LNG, covering current supply and demand, predicted future demand and migration, workforce development and training issues.

Regional WA

South West

PORT OF BUNBURY

CME liaised closely with members and the Port of Bunbury regarding opportunities to address a spike in bottlenecks through the Port of Bunbury. Through CME's advocacy with the Port of Bunbury and WA Government agencies, a coal laydown area was created, easing the bottleneck and reducing demurrage fees for our members.

WORKFORCE ACCOMMODATION SUPPORT

CME advocated for the proposal to build worker's accommodation in Australind. Access to accommodation enables industry to grow and house the skilled workforce required without compounding the current accommodation and housing shortage in regional towns. The project proposal earned the support of the Shire of Harvey and was then approved by the Regional Joint Development Assessment Panel.

Goldfields

KALGOORLIE-BOULDER LAND AND HOUSING

CME's participation in the Kalgoorlie Boulder Chamber of Commerce and Industry-hosted roundtable with the WA Housing Minister in Kalgoorlie to help drive solutions and action. CME created a summary of the expected accommodation demand by members, linked to publicly announced planned/committed mining projects in the region which helped inform the understanding of participants about demand drivers for accommodation in the region.

FEDERAL MINISTERIAL VISITS TO THE GOLDFIELDS

CME coordinated the visit by the Prime Minister and select Cabinet Ministers, including the Federal Minister for Resources to the region. The visit centred on conversations regarding improving regional liveability through digital connectivity, water security, crime reduction strategies and increasing access to housing.

PREMIER AND STATE CABINET VISIT TO KALGOORLIE

The Premier and State Cabinet travelled to Kalgoorlie to hold their Community Cabinet meeting. During this visit, CME hosted a roundtable meeting with the Premier and Deputy Premier with Goldfields members. An overview of the Resources Community Investment Initiative was provided and members discussed ideas for the Goldfields region.

CME MINE EMERGENCY RESPONSE COMPETITIONS

CME, through the Mine Rescue Committee (MRC), facilitated the organisation and delivery of two mine emergency response competitions in the Goldfields region. The biannual competitions provide a critical training ground and opportunity to promote best practice in mine rescue and emergency preparedness to all stakeholders including local community, government, and industry representatives.





Courtesy of Pilbara Minerals

Pilbara

PRIME MINISTER AND CABINET VISIT

CME coordinated industry tours and visits for the Prime Minister and Cabinet during their visit to Port Hedland. In addition, CME hosted community program visits highlighting member support for a range of community initiatives.

KARRATHA SOCIAL CUMULATIVE IMPACT PROJECT (CIP)

CME participated in the CIP working group and supported industry engagement through streamlining the data collection process. This collaborative effort aims to assess and address the cumulative impacts of various activities in the Local Government Area, including resource extraction and development projects.

OECD IN THE PILBARA

CME organised and hosted industry site visits and an industry-only workshop with the Organisation for Economic Co-Operation and Development (OECD) as part of their study mission visit.

PILBARA FAMILIARISATION TOURS

CME planned and hosted two familiarisation tours to the Pilbara, one for key government and parliamentary stakeholders, the other with a cohort of 25 graduates from the departments of Treasury and Jobs, Tourism, Science and Innovation. The tours continue to be an invaluable exercise in terms of bringing key decision makers to WA's resources operations and providing them with an appreciation of the sheer size, scale and continuation of our member company operations.

Kimberley

KIMBERLEY FLOOD SUPPORT ADVOCACY

CME engaged with members to collate relief effort funding and on-the-ground support efforts to communicate industry's collective support.

FIRST POINT OF ENTRY (FPoE) IN THE KIMBERLEY

The Australian Government committed to prioritising the progression of the Port of Broome's application for FPoE following CME's advocacy.

REGIONAL DEVELOPMENT, INFRASTRUCTURE AND TRANSPORT INQUIRY

CME presented to the House of Representatives Standing Committee on Regional Development, Infrastructure and Transport Public Hearing inquiry into the implications of severe weather events on the national regional, rural, and remote road network. CME was joined by member company representatives from Fortescue Metals Group and Pilbara Ports Authority.



CME Women in Resources Awards 2023

Communications and Events

STATEWIDE CAMPAIGN

CME's Safer. Smarter. Cleaner. campaign has concluded after a successful three-year run highlighting how the mining and resources sector prioritises safety and on-site mental health, drives innovation, rehabilitates former mine sites, and plays a critical role in the global transition to net zero. Since 2021, the campaign has reached more than 47 million people and has had more than 25 million complete video views of its online ads. Ipsos research conducted last year revealed the campaign delivered strong cut through of 48 per cent across all age groups, with a particularly strong cut through among young people aged between 18-24 (67 per cent). Ipsos recorded 'significant shifts in sentiment' among those who saw the campaigns compared with those who did not in terms of familiarity, favourability and trust towards the sector. The campaign also benefited from extremely high attribution to member company organisations (approx. 60-70 per cent), well above the Ipsos norm of 9 per cent.

CME Smarter Safer Cleaner campaign



WOMEN IN RESOURCES AWARDS

In March, CME hosted its 15th annual Women In Resources Awards, with more than 1000 people celebrating the inspiring career stories and outstanding achievements of women in the sector, as well as the individuals and companies who champion diversity. This year had a record 144 nominations across six categories.

INSPIRING GIRLS CAREERS FORUM

More than 215 high school students were joined by 80 mining and resources sector representatives at CME's Inspiring Girls Careers Forum, which is a unique careers event designed to showcase the resources industry to female secondary school students and to inspire them to follow in the footsteps of women who have achieved great personal and career success in the resources sector. The event showcased the benefits of working in the sector and the career pathways available.

CME Inspiring Girls Careers Forum





REGIONAL EVENTS

CME has sought to raise the visibility and awareness of the resource sector's contribution to the region through a number of industry and community events, including:

- Hosting CME's annual Regional Women in Resources Sundowner in Bunbury that saw more than 100 representatives from member companies and key community stakeholders toast the contribution women make to the resources sector.
- Facilitating a tour of Alcoa's Wagerup Alumina Refinery and Waroona District High School with Federal Deputy Leader of the Liberal Party and Shadow Minister for Industry Skills and Training Sussan Ley.
- Providing an introduction and presentation to the Shire of Capel council and its executive team highlighting the industry's profile and investment in the region.
- Supporting the WA Government's annual 16 Days in WA campaign by sponsoring and coordinating member company volunteers to run a Bunbury community sausage sizzle with Waratah, which raised more than \$3000 for the organisation.
- Hosting the CME's annual South West stakeholder End of Year Sundowner to celebrate the resources sector with member companies and the region's key stakeholders, which included local and Federal MPs.
- Co-hosting with the Bunbury Geographe Chamber of Commerce and Industry on a presentation by the Reserve Bank of Australia on Australia's current economic conditions.
- Hosting a South West stakeholder's dinner with Regional Development Minister Don Punch in Bunbury that included member companies, local government dignitaries and other key regional stakeholders.
- Presenting the keynote address at the OECD Conference of Mining Regions and Cities in Karratha.
- Hosting CME's annual Regional Women in Resources Sundowner in Karratha, which served as a platform to advocate for greater representation and empowerment of women in the resource sector. These events provided valuable networking opportunities and facilitated discussions on gender diversity, leadership, and career advancement in the industry.
- Hosting the WA Regional Development Minister at the CME Pilbara Regional Council meeting and key stakeholder dinner in Karratha highlighting the key regional priorities impacting members including housing and accommodation shortages, lack of availability of childcare in the region and road safety.
- Facilitating a one-day Pilbara industry familiarisation tour and community and industry networking sundowner in Karratha with Federal Government Senators and officials from the Senate Standing Committee on Rural and Regional Affairs and Transport.



Courtesy of Alcoa

- Presenting at the Goldfields Women's Leadership Forum and the What's Down the Track Forum in Kalgoorlie to provide insights into future industry activity and trends in the Goldfields region.
- Participating in Kalgoorlie's St Barbara Miners Memorial honouring those who have lost their lives servicing the mining industry.
- Supporting the WA Government's annual 16 Days in WA campaign by hosting an afternoon tea with Goldfields members and the Goldfields Women's Refuge. The presentation outlined the valued work of the refuge and the positive impact industry collaboration is having on the services offered by the refuge.
- Hosting the Goldfields end of year sundowner with members and key community stakeholders highlighting the economic contribution of the resources sector to the Goldfields region.
- Presenting a keynote speech at the Kimberley Women's Leadership Forum in Broome.
- Presenting at the Kimberley Economic Forum in Broome on sustainable development, Indigenous economic empowerment, innovation, technology and resources and international trade.
- Supporting the State Government's annual 16 Days in WA campaign by co-hosting the 'Empower Her' luncheon with the Broome Chamber of Commerce and Industry. This event featured female business leaders and community members coming together to support the economic empowerment of vulnerable women in the Kimberley region.



Courtesy of Gold Fields

2023 Key Events

16 March	Women in Resources Awards – Finalists’ Breakfast
31 March	Women in Resources Awards – Gala Dinner
28 April	Annual General Meeting
2 August	Inspiring Girls Careers Forum
10 August	Pilbara WIRA Sundowner
9 October	Pilbara Regional Council Stakeholder Dinner with Hon. Don Punch MLA
19 October	Lunchbox Learnings - Becoming a Menopause Friendly Workplace
19 October	Bunbury WIRA Sundowner
25 – 27 October	Pilbara Familiarisation Tour – attended by JTSI and Treasury Graduates
31 October – 2 November	Pilbara Familiarisation Tour – attended by Federal and State members
22 November	South-West End of Year Sundowner – attended by Federal and State members
5 December	16 Days in WA
11 December	Member Christmas Cocktails



16 Days in WA

WOMEN IN RESOURCES AWARDS – GALA DINNER

31 MAR



INSPIRING GIRLS CAREERS FORUM

2 AUG



PILBARA WIRA SUNDOWNER

10 AUG



BUNBURY WIRA SUNDOWNER

19 OCT



MEMBER CHRISTMAS COCKTAILS

11 DEC



CME Members

(as at 31 December 2023)



Courtesy of Woodside Energy

Ordinary members

- 29Metals Limited
- Albemarle Lithium
- Alcoa of Australia
- Alinta Energy
- Alkane Resources
- AngloGold Ashanti Australia
- APA Group
- API - Australian Premium Iron Joint Venture
- Atlas Iron
- Australian Gas Infrastructure Group (AGIG)
- Bellevue Gold
- BHP
- BP Australia
- Byrnescut Australia
- CalEnergy Resources (Australia)
- Cameco Australia
- Cape Dunstons (formally CAPE)
- Capricorn Metals
- Chalice Mining Limited
- Chevron Australia
- CITIC Pacific Mining Management
- Clough Projects
- Cockburn Cement
- Covalent Lithium (formally WA Lithium)
- De Grey Mining
- Develop Global
- Doral Mineral Sands
- Evolution Mining
- FMR Investments
- Fortescue
- Glencore
- Gold Fields Australia
- Gold Road Resources
- Hastings Technology Metals
- Iluka Resources
- INPEX Australia
- InterContinental Energy
- Karora Resources
- Lynas Rare Earths
- Macmahon Contractors
- Mineral Resources
- Monadelphous Group
- Mount Gibson Iron
- Newmont Australia
- Northern Minerals
- Northern Star Resources
- Norton Gold Fields
- Orica
- Pantoro
- Perenti Group
- Pilbara Minerals
- Poseidon Nickel
- Premier Coal
- Ramelius Resources
- Regis Resources
- Rio Tinto
- Rosslyn Hill Mining
- Roy Hill Holdings
- Santos
- Sheffield Resources
- Shell Australia
- Simcoa Operations
- South32
- Spartan Resources (formally Gascoyne Resources)
- SRG Global
- St Barbara Limited
- Superior Gold
- Talison Lithium Pty Ltd
- Theia Energy
- Thiess Pty
- Thunderbird Operations
- TransAlta Energy (Australia)
- Tronox
- Woodside Energy
- Yara Pilbara Fertilisers

Associate members

- ABC Refinery
- AECOM Australia
- Allens
- Alliance Airlines
- Arc Infrastructure
- Ashurst
- Aspen Medical
- Astill Consultants
- ATCO Australia
- ATI-Mirage Training & Business Solutions
- Aurizon
- Austin Powder
- Bis Industries
- Blackbox Control
- Breight
- Carey Group Holdings
- Central Regional TAFE - Geraldton
- Clayton Utz
- Compass Group (Australia)
- Construction Training Fund
- Corporate Affairs Australia
- Corrs Chambers Westgarth
- Deloitte Touche Tohmatsu
- DUG Technology
- Dyno Nobel Asia Pacific
- EBM Insurance
- Edith Cowan University
- Element Advisory
- Engeny Australia
- ERGT Australia
- EY
- Fenner Dunlop Australia
- Fleetwood
- Fremantle Ports
- GHD
- GR Engineering Services
- GreenSquareDC
- Herbert Smith Freehills
- Hexion Australia
- Horizon Power
- Integrate Sustainability
- JBS&G Australia
- Jones Lang LaSalle
- Kimberley Marine Support Base (KMSB)
- King & Wood Mallesons (KWM)
- Lycopodium
- M & M Walter Consulting
- Mader Group
- Mapien
- McGarry Associates - Cockburn Office
- Mercer
- Mills Oakley
- Minprovis International
- Minter Ellison Lawyers
- Mitsui Iron Ore Development
- National Jet Express (formerly Cobham Aviation Services Australia)
- North Metropolitan TAFE
- OccuMED Consulting
- OMSB
- Paul & Warner Resources
- People Solutions Australasia
- Perth Airport
- Pilbara Ports Authority
- Port Hedland International Airport
- Primero Group
- Programmed Skilled Workforce
- PwC
- Qantas Airways
- Ramboll Australia
- RED OHMS Group
- ReGen Strategic (formally CGM Communications)
- Resource Capital Funds
- Schlam
- SEC Newgate Australia
- Shire of East Pilbara
- Sodexo Remote Sites Australia
- Tait Consulting
- Talis Consultants
- The Perth Mint
- Trainwest
- Umwelt (Australia)
- Urban Development Institute of Australia (UDIA)
- Virgin Australia Regional Airlines
- Volt Power
- Wallis Drilling
- Western Environmental
- Western Power
- Work Health & Safety Foundation (previously IFAP)
- WSP



Courtesy of Northern Star Resources



CME

The Chamber of
Minerals and Energy
of Western Australia

Level 13/225 St Georges Terrace, Perth WA 6000

Locked Bag N984, Perth WA 6844

Tel: +61 8 9220 8500

Email: chamber@cmewa.com

Website: www.cmewa.com.au