

Total direct economic contribution to Western Australia



Wages & salaries



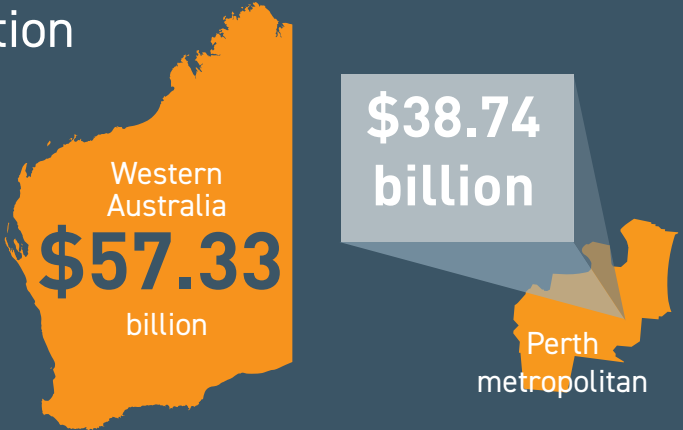
Payments to the Government



Business purchases



Community contributions



In the region of **Perth metropolitan**, total direct contributions of \$38.74 billion went to supporting...

41,300

FULL-TIME JOBS

\$6.73 billion

IN WAGES & SALARIES



10,597

BUSINESSES



278

COMMUNITY ORGANISATIONS



5

LOCAL GOVERNMENTS



BUSINESS PURCHASES +



COMMUNITY CONTRIBUTIONS +



LOCAL GOVERNMENT PAYMENTS

=

\$32.01
BILLION

Spending in this region added another 198,360 full-time jobs and \$30.98 billion in gross value add to the local economy, supporting more than **one in five** jobs!